

The Collection Exchange module to the SirsiDynix Unicorn® Library Management System gives libraries the power to increase their offerings to users without increasing their expenditures. In the spirit of the traveling art collection and the interlibrary loan, the Collection Exchange module manages the rotation of materials among participating libraries within a prescribed region. With this win-win situation, everyone benefits – the libraries take advantage of one another's resources, the users can browse a steady flow of new materials, and the funding agency conserves precious funds.

Collection Exchange saves you the complicated, time-consuming task of managing this exchange manually. With, however, much of the management is done for you. Staff make initial decisions and set up as simple or as complicated an exchange program as they choose.

Exchange Category	%	Quantity
Adult Novels	50%	5
New	0%	0
Children	50%	5
New	0%	0
Total	100%	10

Exchange Category	Quantity	Total			Local Collection
		In Exchange	Difference %	Adjustment	
Adult Novels	5	-1	-20%	1	
Children	5	0	-60%	0	
Total	10	7	30%	0	

A library can input the number of items it wishes to send to another participating library or use a percentage based on the total number of items.

- **Resource sharing benefits** escaping the tedious chores involved
- Purchase fewer duplicates for **big cost savings**
- **Enhance and freshen** your library's collection better serving users
- **Assure equal distribution** of shared materials to satisfy all participating sites

- Large public systems that support numerous branches can exchange materials and purchase fewer duplicate copies
- Small libraries can join together in consortia to share resources
- School boards can merge a portion of their funds to buy resources that can rotate among schools
- Academic libraries can support distance education courses by exchanging reserve collections, reference collections, and required course reading collections
- Bookmobiles can be supported
- Community libraries can work with local nursing homes and hospitals

Making exchange choices

The Collection Exchange module determines which of the available materials will be sent to each of the participating libraries to make sure exchanges are equitable and appropriate for the receiving libraries.

Tracking the exchange process

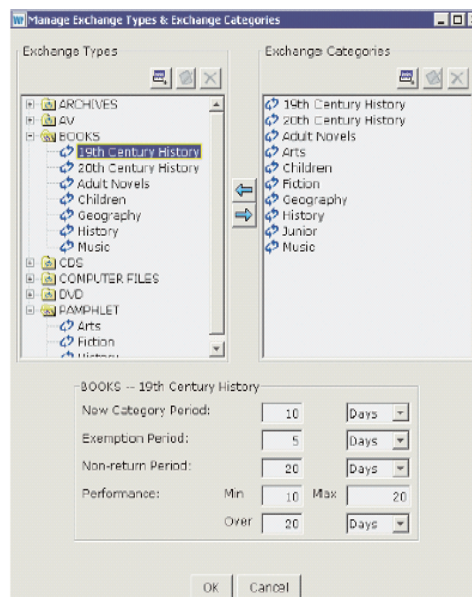
The Collection Exchange module offers options for changing the status of the items as they transfer from one place to another. Materials can be accounted for at any time.

Setting up an exchange library record

Your library sets up a specific Exchange Library with an identifying Exchange Library record for each participating

Unicorn library that includes contact information and other fields you choose. The Collection Exchange module considers portions of this information when making exchange selections for the site, along with profiles configured by the exchange library. A library

can input the number of items it will send to another participating library or use a percentage based on the total number of items.



All libraries receive materials of the Exchange Type, Exchange Category, and of the quantity that makes sense for them.

Basic requirements

WorkFlows 2004 Client

- Windows 2000 or XP
- 256 MB RAM
- 700 MHz or greater processor speed
- 60 MB free hard disk space
- 1024 x 768 or better screen display
- TCP/IP network

Depending on each library's individual needs and usage, these basic requirements could vary.

Bringing Knowledge to Life.